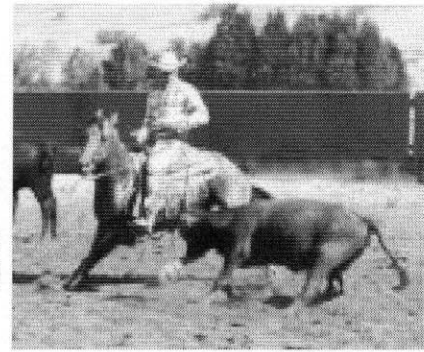


SRCHA and East Hill Quarter Horses



Battleford, Sask present:

Reined Cow Horse Shows August 29 & 30, 2009

Numerous Events and Classes, \$4000 Added Purse!

Classes include Open Horse, Junior Horse, 3 Yr Old, Novice Horse, Open Non-Pro Rider, Intermediate Non-Pro Rider, Novice Non-Pro Rider. Cutting and Working Cow Horse Classes.

LOTS OF EXCITEMENT!

Sponsors:

PLATINUM: *Lyle V Schell Construction Mgmt Services Ltd.*

GOLD: Chico's Meat 'n' Place
River City Plumbing & Heating Ltd.
Straitline Builders



email: reph@sasktel.net

RIVER CITY Ph. 306.445.4344
PLUMBING, HEATING & AIR Fx. 306.445.4497

bryant
MECHANICAL CONTRACTORS Heating & Cooling Systems since 1967

SaskEnergy Network Member Todd Winterhalt
General Manager

841-106th Street, North Battleford, SK S9A 1W3
24 Hr. Emergency Service

Gerald Crozier
President & Site Manager
Journeyman carpenter since 1981

Fine homebuilding &
Interior finishing
Complete renovations
Custom cabinets

**STRAIGHT
LINE
BUILDERS
INC.**

Office: 306-937-3601
Fax: 306-937-3603
Toll free: 877-937-3501
Email: gerald@straightlinebuilders.ca
www.straightlinebuilders.ca

P Dealer for P2000 Insulation
Check out the difference at:
www.p2000insulation.ca

SILVER: Austin's Saddlery
Battleford Furniture Ltd.
Creekside Arena
Ivan White Auction Service
Lakeland Vet Clinic
Neil Kramer Auction Sales Ltd.
Norsask Farm Equipment Ltd.

BRONZE: Anderson Pump House Ltd.
Don Heck Farrier Service
Doug's Paint Shoppe Ltd.
Hidden Meadows Ranch
KFC The Ranch House
Winterhalt Quarter Horses

Two miles west of Highway 16 on the Sunshine Road. Watch for signs.
For more information, contact Les or Lee at 306-445-6652.
Canteen on grounds, provided by Country Corners 4-H Club